

Friends of Lake Gwelup

SEASON OF DJERAN ————— APRIL – MAY



SAVE THE DATE

- **Saturday 20th May Free Guided Walk with David Pike. 8am-10am**
Meet at 8am at the Karrinyup Scout Hall.
- **Sunday 21st May FoLG Bush Care Morning.**
8.45am-11am
- **Saturday 17th June Free guided Walk.**
8am-10am
Meet at the Karrinyup Scout Hall.
- **Sunday 18th June FoLG Community Planting Day**
8.45am-11am

SEASON OF DJERAN

APRIL AND MAY

Djeran

The weather is cooling and the mornings are chilly around the reserve.

The acorn banksias are in bloom at the southern end of the reserve around Perth the red flowering gums are blooming.

At the northern end of the reserve the Red Tailed cockatoos are back. They are spending their days in the Jarrah and Marri trees eating the seeds and having a old squawk. These cockatoos are endangered and we are happy to see them return.

As the wet weather sets in it also means the turtle hatching season has begun!

FRIENDS OF LAKE GWELUP COMMUNITY PLANTING DAY

Sunday 18th June
9am-11am

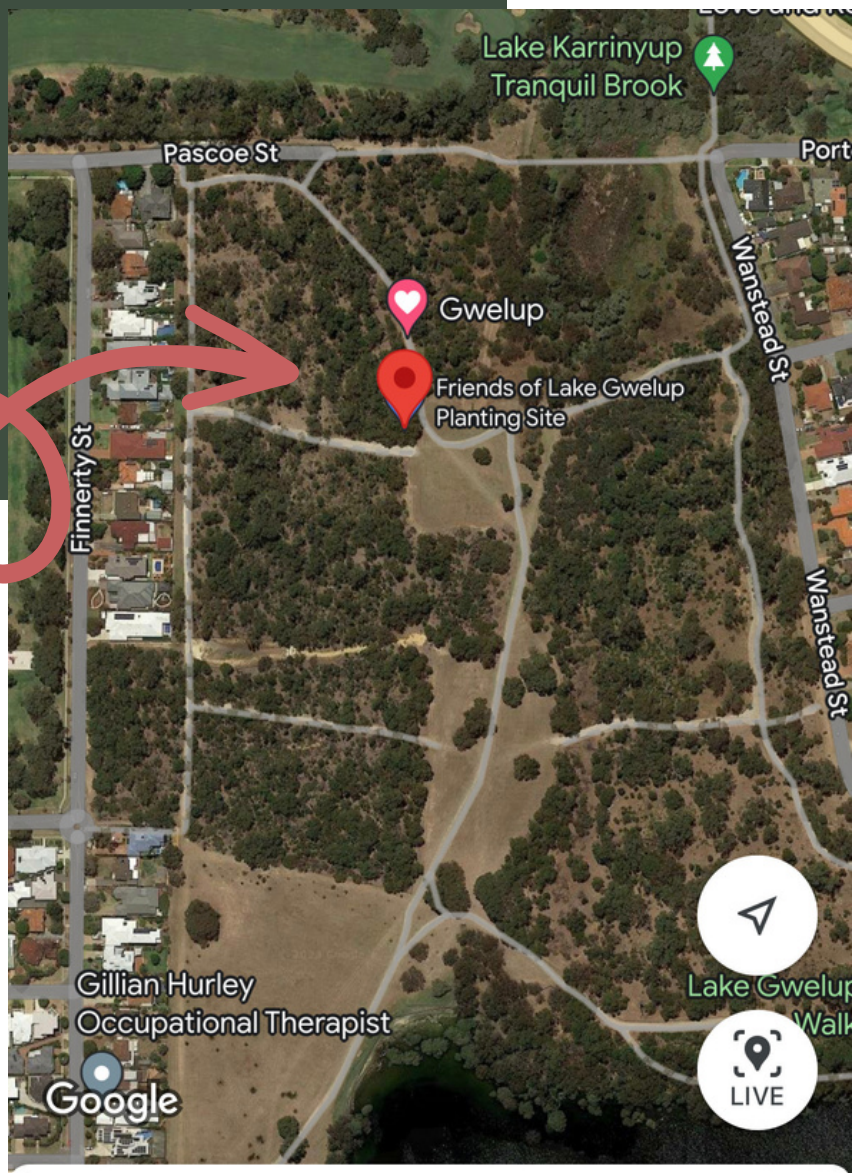
Everyone is welcome
Learn about your local bushland

Help us plant hundreds of native flowering plants to attract pollinators and encourage biodiversity in the bushland.

Bring a water bottle, gloves and enclosed shoes.

Nature art activities for the kids.
Some refreshments provided.

MEET
HERE



Friends of Lake Gwelup Planting Site
Head to our website to register
www.friendsoflakegwelup.com.au

IT'S TURTLE HATCHING SEASON



MAY - SEPTEMBER

Long-Necked Turtles

What should you do if you spot a baby turtle hatchling?

Please pick the baby turtle hatchling up and place it at the water's edge.

Please choose a spot where the turtle can hide, e.g. near reeds / vegetation.

Please choose a spot away from birds.

If the hatchling appears ill or injured please don't hesitate to call us for advice. [ph/message 0404 007 308](tel:0404007308).

Please let us know if you spot a baby or adult turtle at Lake Gwelup Reserve. The Friends of Lake Gwelup and the City of Stirling are working together to help conserve our population of Long Necked Turtles. You can log your sighting on the Turtle Sat App.

We are closely monitoring the movements of the turtles at Lake Gwelup and we cannot do this without your help. Please keep dogs under control and away from turtles at all times.

Friends of Lake Gwelup

friendsoflakegwelup.com



FRIENDS OF
LAKE GWELUP

The Friends of Lake Gwelup
are looking for volunteers
just like you!

The time commitment is small
and the rewards are endless!

Could you help with any of the
following?

- Weeding
- Planting
- Watering Plants
- Website Upkeep
- Newsletter Writing
- Community Engagement
- Seed Propagation
- Grant Applications
- Turtle Trackers

Interested? Please get in contact
Kirstie Pupazzoni
friendsoflakegwelup@gmail.com

Together
We Can!

